

I-75 & BENJAMIN HAWKINS | BYRON

\$ NEGOTIABLE



Multiple parcels
available

BENJAMIN HAWKINS INDUSTRIAL PARK

THE PROPERTY

- One mile from I75 at exit 149
- Total acres: 40.15
- Distance to Airport: 87 miles
- Distance to Port: 183 miles

PROPERTY DETAILS

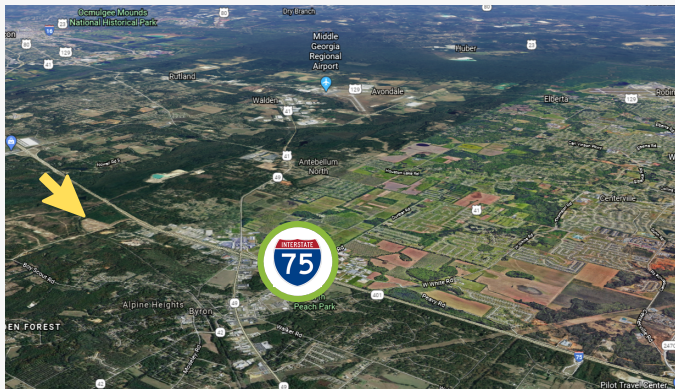
- Open, flat land ready for construction
- All utilities on-site
- Zoning: Industrial
- For sale: Yes
- Foreign Trade Zone: Yes
- 32.680592, -83.748204
- Water: City of Byron - 12" main
- Wastewater: City of Byron - 2" main
- Electric: Georgia Power; Customer Choice at 900 kWh
- Natural Gas: Jointly Owned Natural Gas - 2" main
- Telecom: Cox, AT&T, Windstream

DEVELOPMENT AUTHORITY OF PEACH COUNTY

425 James E Khoury
Drive
Fort Valley, GA 31030

BJ WALKER

Executive Director
478-825-3826 office
478-256-9257 cell
bufordwalker3@gmail.com
www.growitsweeter.com



BENJAMIN HAWKINS INDUSTRIAL PARK



PEACH COUNTY HAS OVER...

5,000
500,000
630

ACRES OF AVAILABLE LAND
SQ. FT. OF AVAILABLE INDUSTRIAL SPACE
CONTIGUOUS ACRES FOR DEVELOPMENT
With Active Rail Onsite

WORKFORCE:
161,000
STRONG



IN THE PEACH COUNTY AREA



Highly Skilled Labor, Competitive Wages, Right to Work Community.

6 & 5 TECHNICAL COLLEGES

Within the Middle Georgia region



40 years customized workforce training by Quick Start

The **Peach County Workforce Development Center** is located within the active South Peach industrial Park.



PEACH COUNTY HIGH SCHOOL

has several technical certificates, diplomas and programs geared towards graduating students

FireStarter Fab Lab:
A 7000
SQ. FT. FACILITY
with high level job/training capability

PEACH COUNTY
Target Industries



- Warehousing/Distribution
- Logistics/Supply Chain
- Agribusiness
- Manufacturing
- Aerospace

